

Brunel Quiz!

Good day! Put your knowledge to the test and try this quiz all about me!



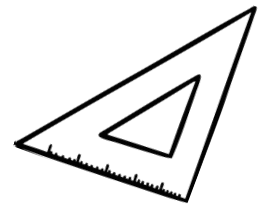
Q1. Brunel is the Victorian engineer who designed the *SS Great Britain*. But what was his first name?

- A) Marc
- B) John
- C) Isambard



Q2. Brunel was born on the 9 April 1806, but in which city?

- A) Bristol
- B) Portsmouth
- C) London



Q3. Aged 14 Brunel's dad sent him to a school in France to get a technical education. What subjects was the school famous for teaching?

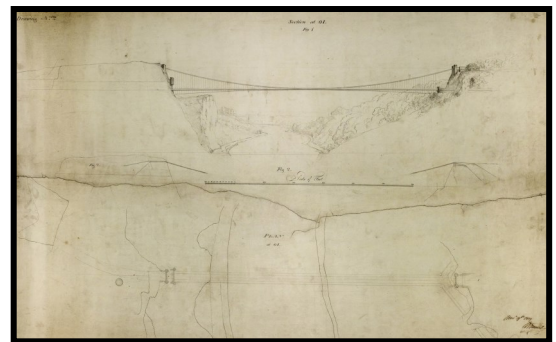
- A) Engineering and Maths
- B) English and Music
- C) PE and History

Q4. In January 1828, Brunel nearly died in a flood while working in which tunnel?

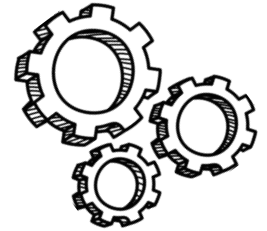
- A) Box Tunnel
- B) Thames Tunnel
- C) Channel Tunnel

Q5. In 1829 Brunel entered a competition to design a bridge across the River Avon in Bristol. What is the bridge called?

- A) Clifton Suspension Bridge
- B) Pero's Bridge
- C) Brunel's Bridge



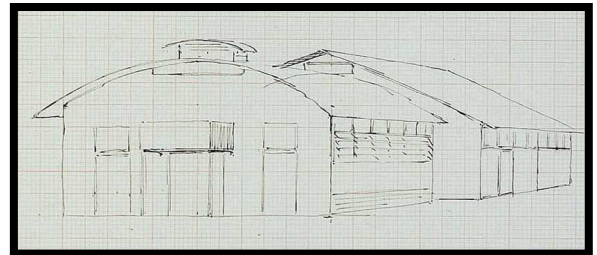
Q6. In 1833 Brunel was appointed the Chief Engineer of the Great Western Railway, which was the first railway line between Bristol and which city?
A) Glasgow
B) London
C) Cardiff



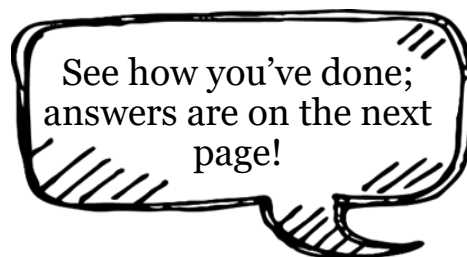
Q7. What made Brunel's SS Great Britain an important ship?
A) It was the biggest ship in the world between 1843 and 1854
B) It was the first iron hulled, steam powered ship with a screw propeller
C) Both A and B

Q8. Brunel was such fan of which author that he had ten paintings made showing scenes from their work?
A) William Shakespeare
B) Roald Dahl
C) Jacqueline Wilson

Q9. Brunel designed the first prefabricated hospital for use in which war?
A) World War I
B) Crimean War
C) English Civil War



Q10. Brunel died on the 15 September 1859 meaning he never saw which project finished?
A) Clifton Suspension Bridge
B) SS Great Western
C) Atmospheric Railway





Brunel Quiz

Answers

1. C - Isambard
Brunel's full name was Isambard Kingdom Brunel.
2. B - Portsmouth
Brunel was born in Portsmouth. His dad was working for the Royal Navy at the time, so the family were living in the city.
3. A - Engineering and Maths
Marc Brunel wanted his son, Isambard Brunel, to follow in his footsteps and become an engineer too, so chose a school that specialised in these subjects.
4. B - Thames Tunnel
While Brunel was working inside the Thames Tunnel, water from the river above broke in and flooded the tunnel. He was briefly trapped by debris before being rescued by other workers though he was badly injured.
5. A - Clifton Suspension Bridge
Brunel won the competition with a design based on Ancient Egyptian style; however, work on this bridge was stopped in 1853 with only the towers constructed due to the lack of money.
6. B - London
Brunel even chose the exact route between London and Bristol that the tracks were then built on.
7. C – Both A and B
The SS Great Britain was the both the world's biggest ship when it launched and the first ship to combine an iron hull and a steam powered screw propeller.
8. A – William Shakespeare
Brunel was a big fan of Shakespeare's plays and displayed nine of the paintings in the dining room, known as the Shakespeare Room, of his London home. The paintings included scenes from As You Like It and Midsummer Night's Dream.
9. B - Crimean
During the Crimean War (1854-1856) conditions in the hospitals for wounded soldiers were bad with many catching and dying from a range of diseases such as cholera and typhoid. Brunel designed Renkioi hospital to provide improvements in both sanitation and ventilation.
10. A - Clifton Suspension Bridge
Following Brunel's death, engineers Sir John Hawkshaw and William Henry Barlow, raised the money, made a few small changes and finished the bridge in 1864. The bridge is still used today.

