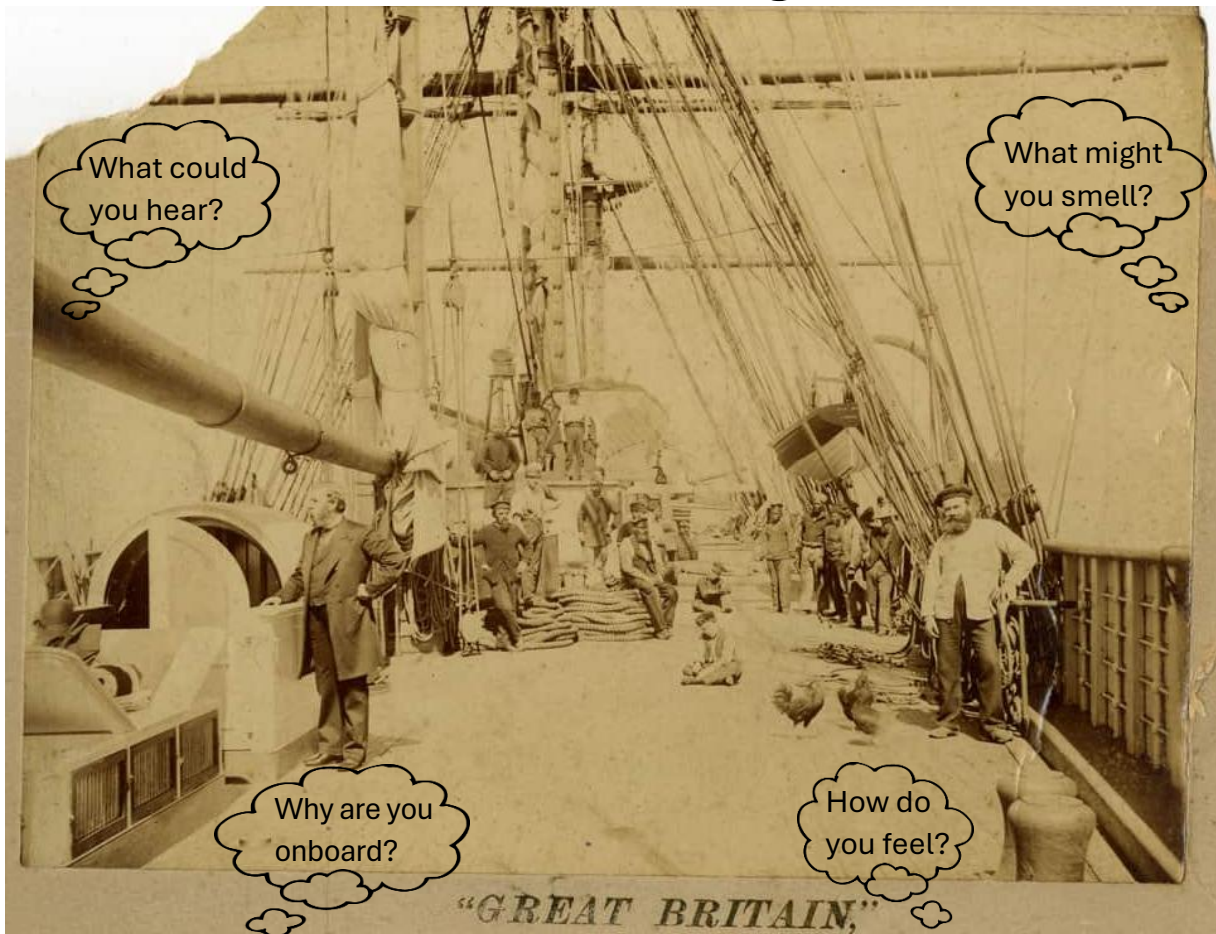


Creative Writing



Photograph of the crew of the SS Great Britain, courtesy of the SS Great Britain Trust

Taken in the 1880s, this photograph shows the crew of the SS Great Britain standing on the top deck. The ship was being used as a cargo ship, taking coal to and from America; each trip took up to six months.



Imagine that you are part of the crew working on the ship and describe what is happening on board. You can use the picture, prompts and glossary below to help you.

Sentence starters:



While the crew and I were hard at work



Going up on the deck I saw...

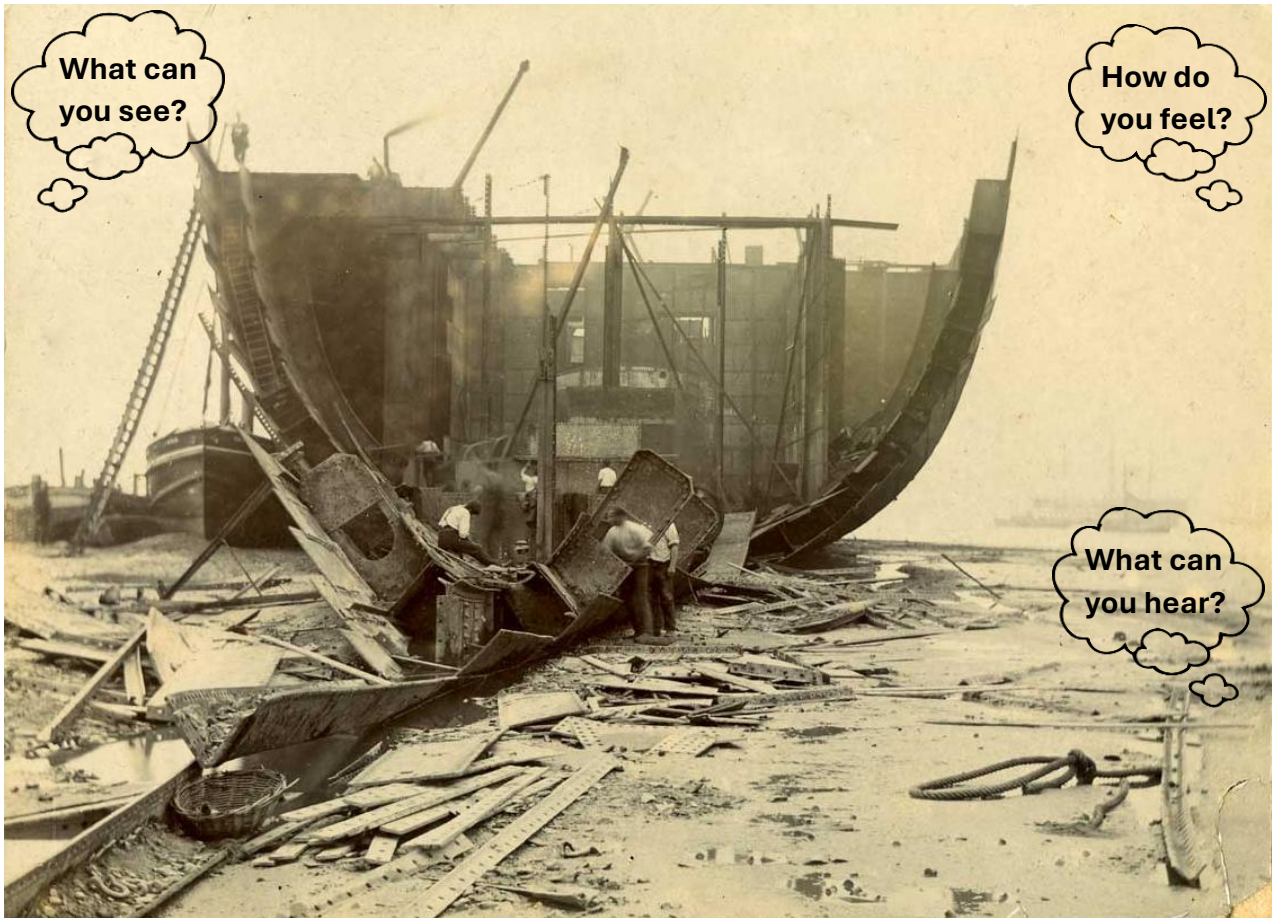


At midday the ship...

Key words glossary:

- Crew – people who work on a ship
- Deck – the part of the ship that forms a floor to work on. E.g. Top deck
- Cabin – a compartment (room) for passengers or crew
- Rigging – ropes or wires used to attach sails

Creative Writing






Courtesy of the SS Great Britain Trust - BRSGB-2013.00022.1.

Taken in 1889 this photograph shows Brunel's final ship the *Great Eastern* being broken up on the bank of the River Mersey in Liverpool. Launched in 1858 the ship had never been a commercial success, so eventually was taken apart and sold for scrap metal. Due to its double iron hull it took workers two years to do it!

ele

Imagine you are one of the people in the photograph slowly taking the *Great Eastern* apart and describe what it's like. You can use the photo, prompts and glossary below to help you.

Sentence starters:

-  Carefully, I picked my way down to the water's edge...
-  "Don't look down" I told myself as I slowly began to climb...
-  The hull of the *Great Eastern* rested by the River Mersey like...

Key Words Glossary:

- Hull – the main body of the ship
- Iron – the type of metal the *Great Eastern* was made from
- Keel – the “backbone” of the ship, running along the bottom of the hull
- Rivets – similar to bolts and used to hold pieces of iron together to make the ship's hull