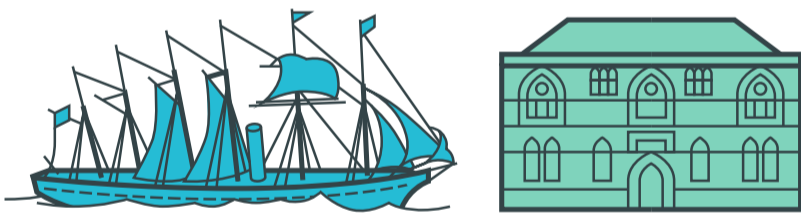


Museums make a difference...

Thanks to funding from **Department for Education** and **Arts Council England**, organisations in the **'Museums and Schools programme'** are responding *innovatively* and *flexibly* to the needs of *children, young people* and teachers in their local communities.

The funding, which

45



MUSEUMS AND GALLERIES

have received...

over the past **3 years** has allowed us to engage:

202,099



PUPILS FROM



5,640

SCHOOLS



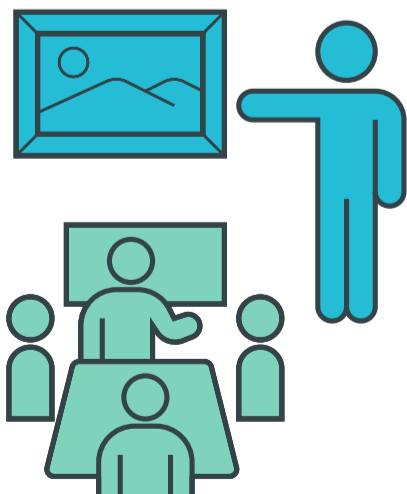
48,662

of whom were in receipt of pupil premium



and support the **EMPLOYMENT** and **PROFESSIONAL DEVELOPMENT** of

32



PEOPLE IN THE MUSEUM SECTOR, including several entry level positions.

We have been uniquely placed before and during the **pandemic** to provide **VALUABLE SUPPORT**



to schools, children and young people in areas of **SOCIO-ECONOMIC DEPRIVATION**



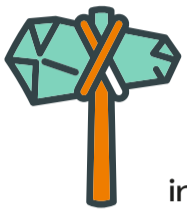
where children have limited access to **CREATIVE EXPERIENCES** and **CULTURAL CAPITAL.**



Between March & December 2020...

5,483

PUPILS HAVE BEEN INSPIRED BY...

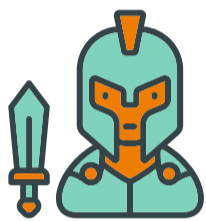


Real MUSEUM OBJECTS in the classroom



COVID SECURE workshops in museums

OUTREACH SESSIONS in schools



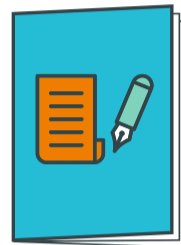
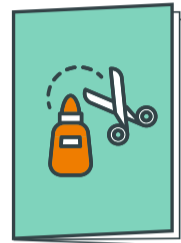
Blended learning and ONLINE SESSIONS



7,708

HANDS-ON ACTIVITY PACKS

have been distributed to children experiencing digital poverty to support creative exploration and curriculum based learning.



743,366



CHILDREN AND YOUNG PEOPLE ACCESSED CREATIVE ACTIVITIES AND MUSEUM COLLECTIONS ONLINE

through digital resources for home-schooling and families.

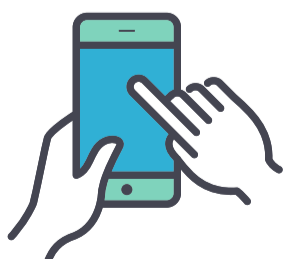


OUR ONLINE RESOURCES REACHED

3,657,996

PEOPLE ON SOCIAL MEDIA

3,657,996



...supporting teachers & families to bring the curriculum to life.

With thanks to the Department for Education and Arts Council England - your ongoing funding and support will allow us to continue this vital work.

Supported using public funding by



ARTS COUNCIL ENGLAND