

☞ Dry Dock – Explorers Under the Glass Sea ☜

Welcome to the Dry Dock, this is where the SS Great Britain was built and where it is now being looked after. Explore under the glass sea to see what you can discover, but take care on the slippery, uneven floor, it was built in 1839!

Can you find the ship's anchor?



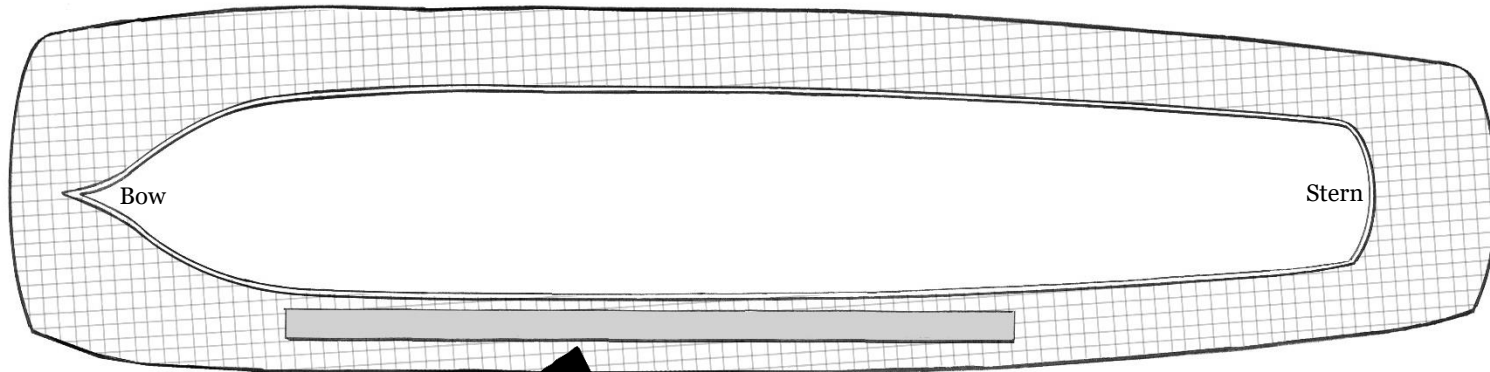
What shapes can you see on the hull of the SS Great Britain?



Look for holes in the SS Great Britain. What might have caused them?



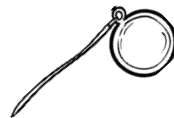
How do you think the ship left the Dry Dock?



Start here



Estimate how many rivets you would need to build the SS Great Britain.



Feel the air coming out of the pipes under the ship, what is it like?



Can you spot the screw propeller?

