

## ~ A 21<sup>st</sup> Century Great Exhibition ~

Imagine you have never seen an elephant before, not in real life, in a video or even in a picture. You enter a building and suddenly come face to face with one, how would you feel?

For thousands of people visiting the Great Exhibition in 1851, that was a real experience. In a time, long before the internet and television, visiting the Great Exhibition allowed people to see some of the most exciting objects and inventions of the Victorian Era.



*Interior of the Russian Hall by Special Collections at John Hopkins University.*

Over six million people came to marvel at around 100,000 objects, from enormous steam trains and telescopes to gold watches and a life-sized stuffed elephant! All housed in a gigantic glass and iron building, known as the “Crystal Palace”, specifically built for the exhibition. For the visitors it must have been an amazing experience.

*ele*

If you were going to put on a 21<sup>st</sup> Century Great Exhibition:

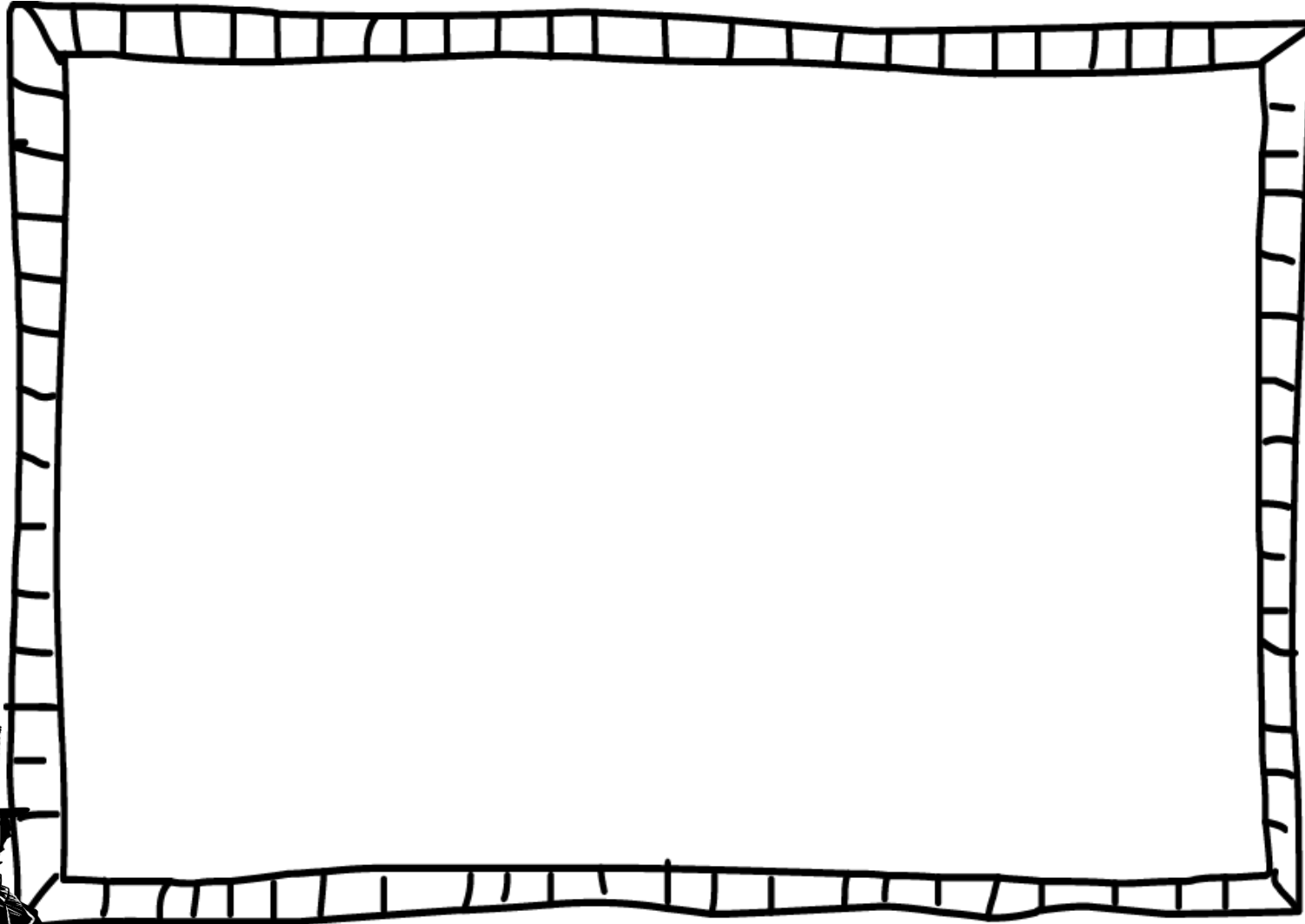
- What incredible things would you want to see in real life?
- What type of building would you design to put all your exhibits in?



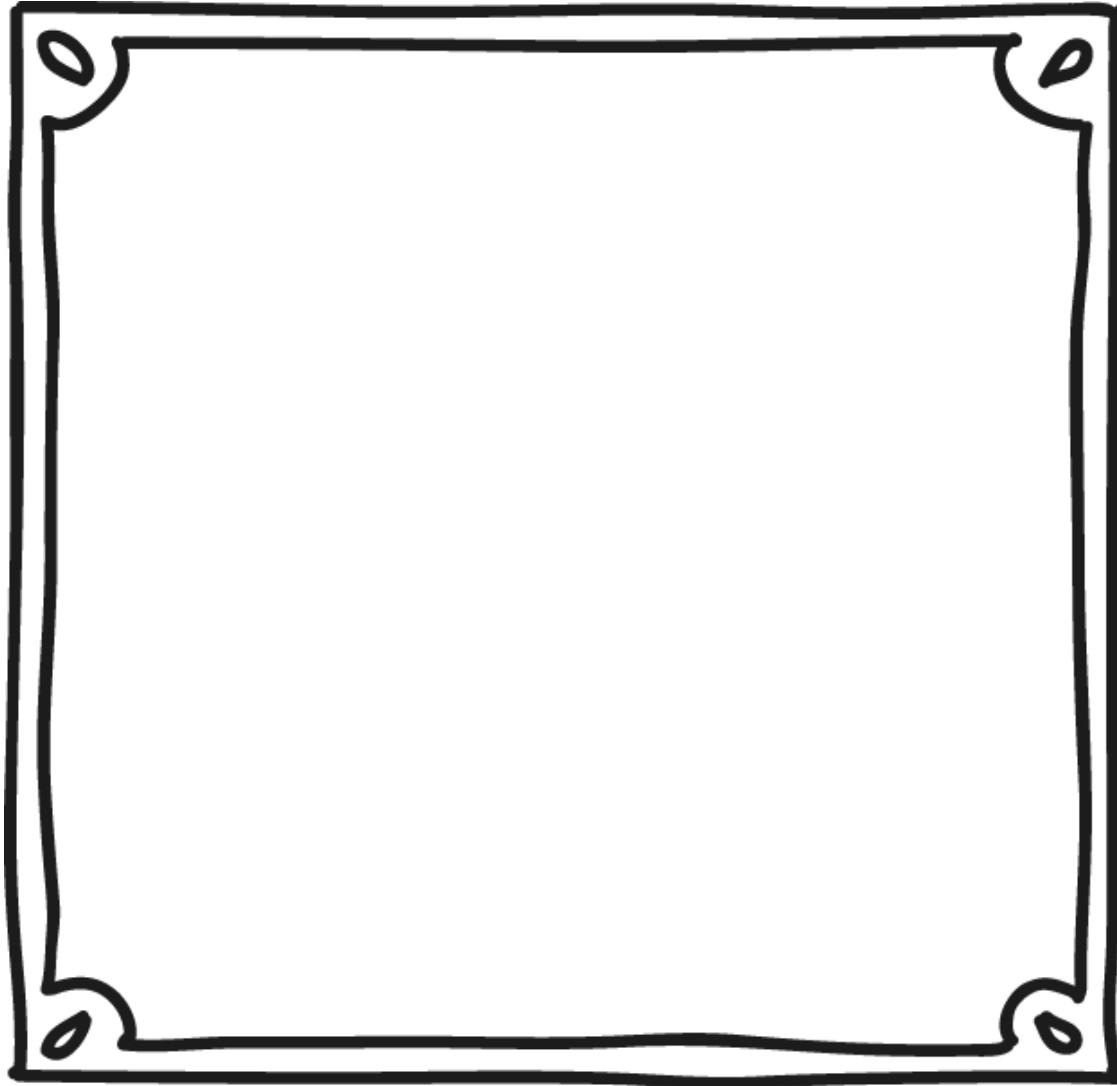
Plan your own Great Exhibition to show off the most exciting and interesting objects, animals and inventions around today. You can use the template on the next page or things you have at home.



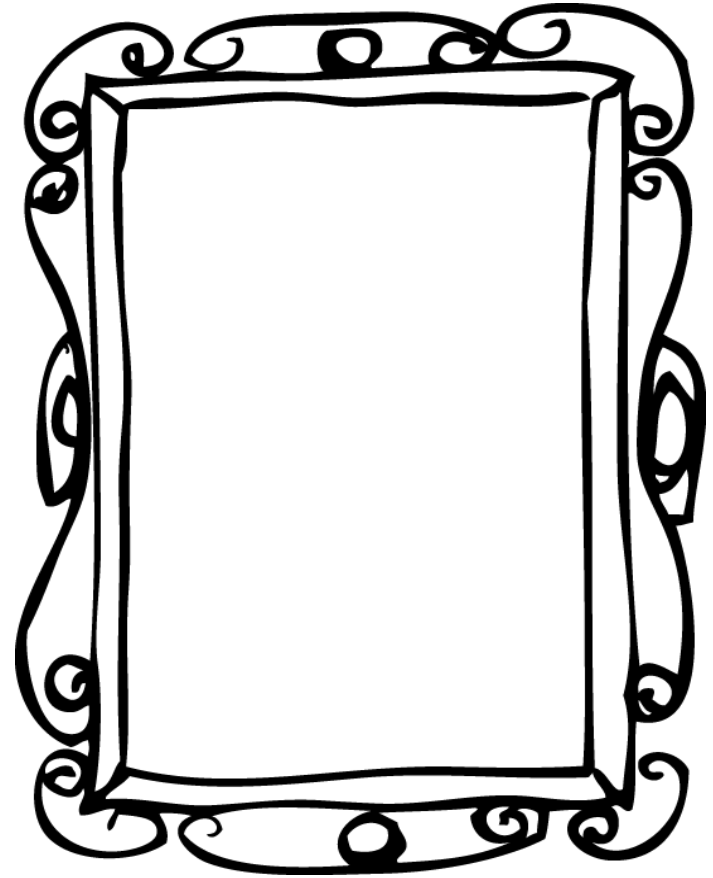
# My Great Exhibition



The Building



Exhibits



The top exhibit

